

REO Performance Metrics

Performance Metrics Monthly Report

Rider Experience and Operations Committee

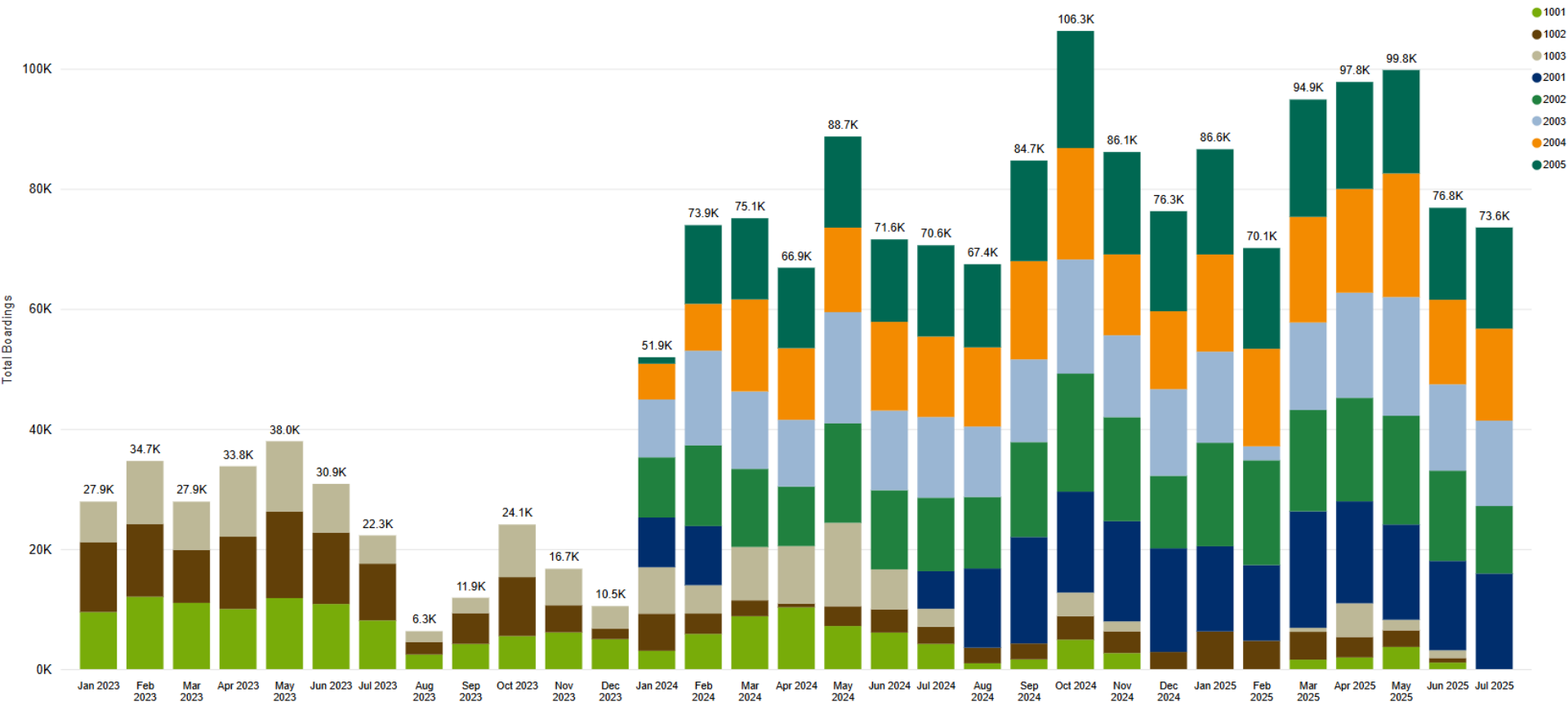
9/4/2025



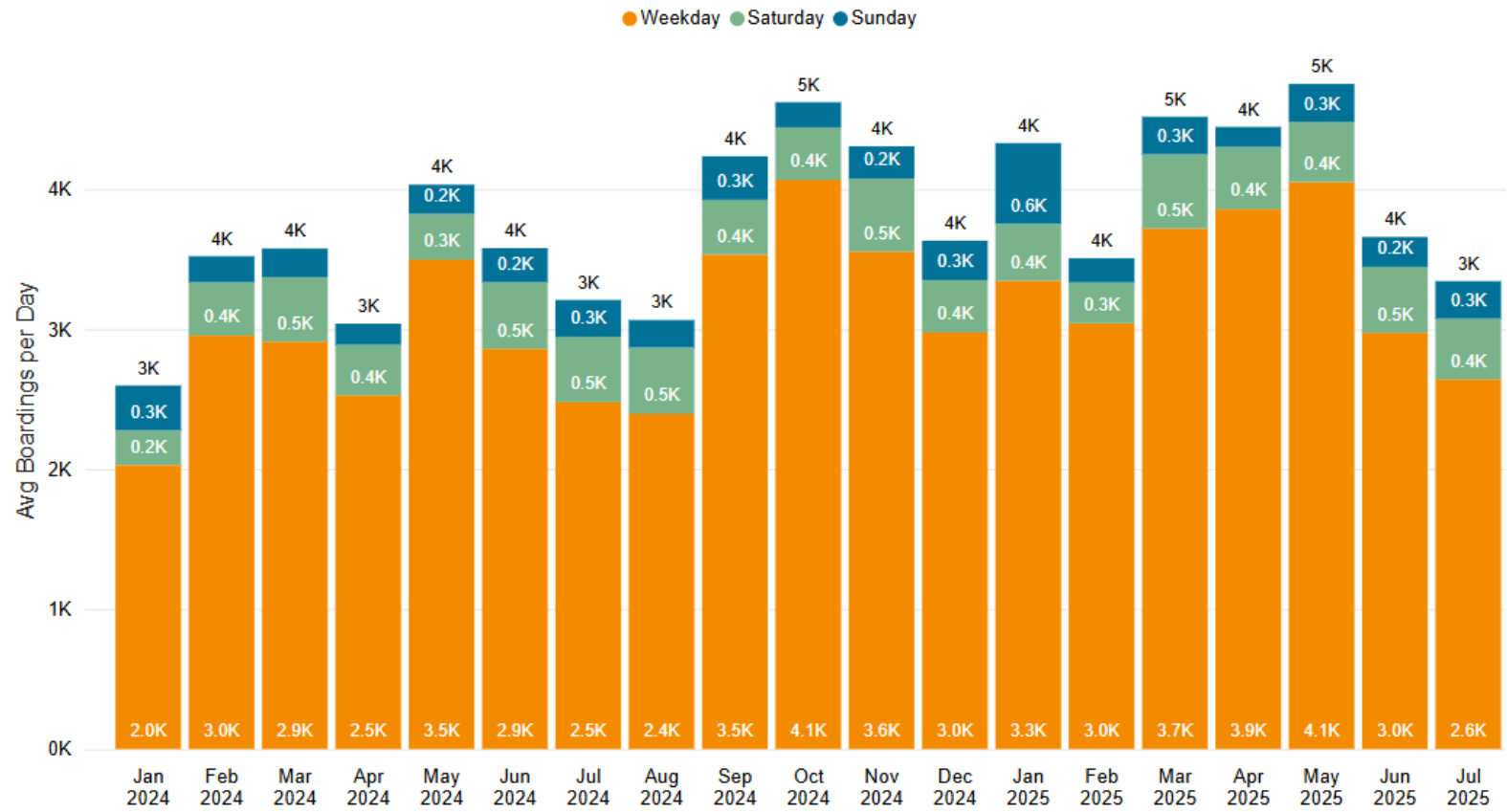
Why we are here

- Describe T-Line's performance now that the Hilltop Extension now 2 years old
- This presentation is for information only

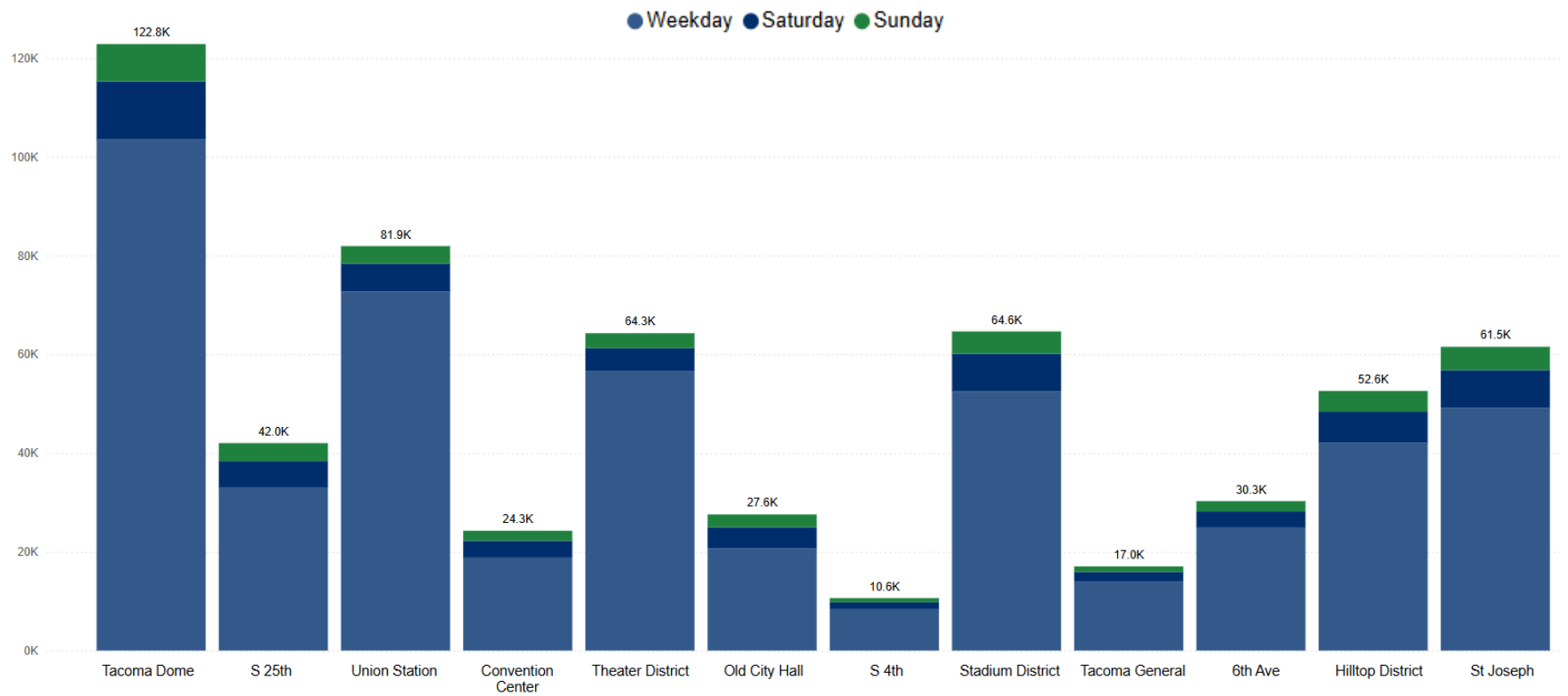
Ridership – T-Line Total Boardings by Vehicle



Ridership – T-Line Average Weekday Boardings



Ridership – T-Line Boardings by Station, 2025



T-Line – Real Time Availability

From soundtransit.org:

Stop #T03 | Accessible: **Yes**



T Line to St Joseph

8:37 a.m. - **On Time**

4 min



T Line to Tacoma Dome

8:42 a.m. - **2 minutes late**

9 min



T Line to St Joseph

8:49 a.m. - **On Time**

16 min

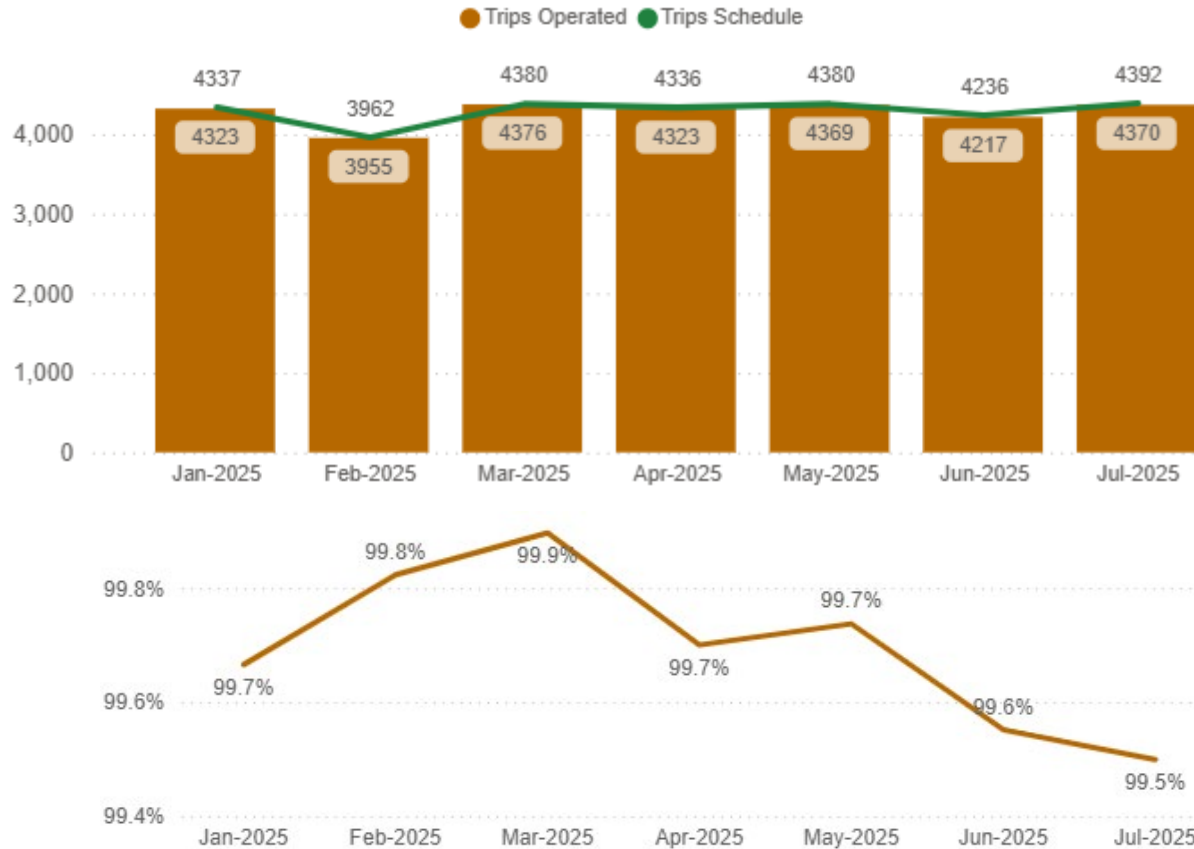


T Line to Tacoma Dome

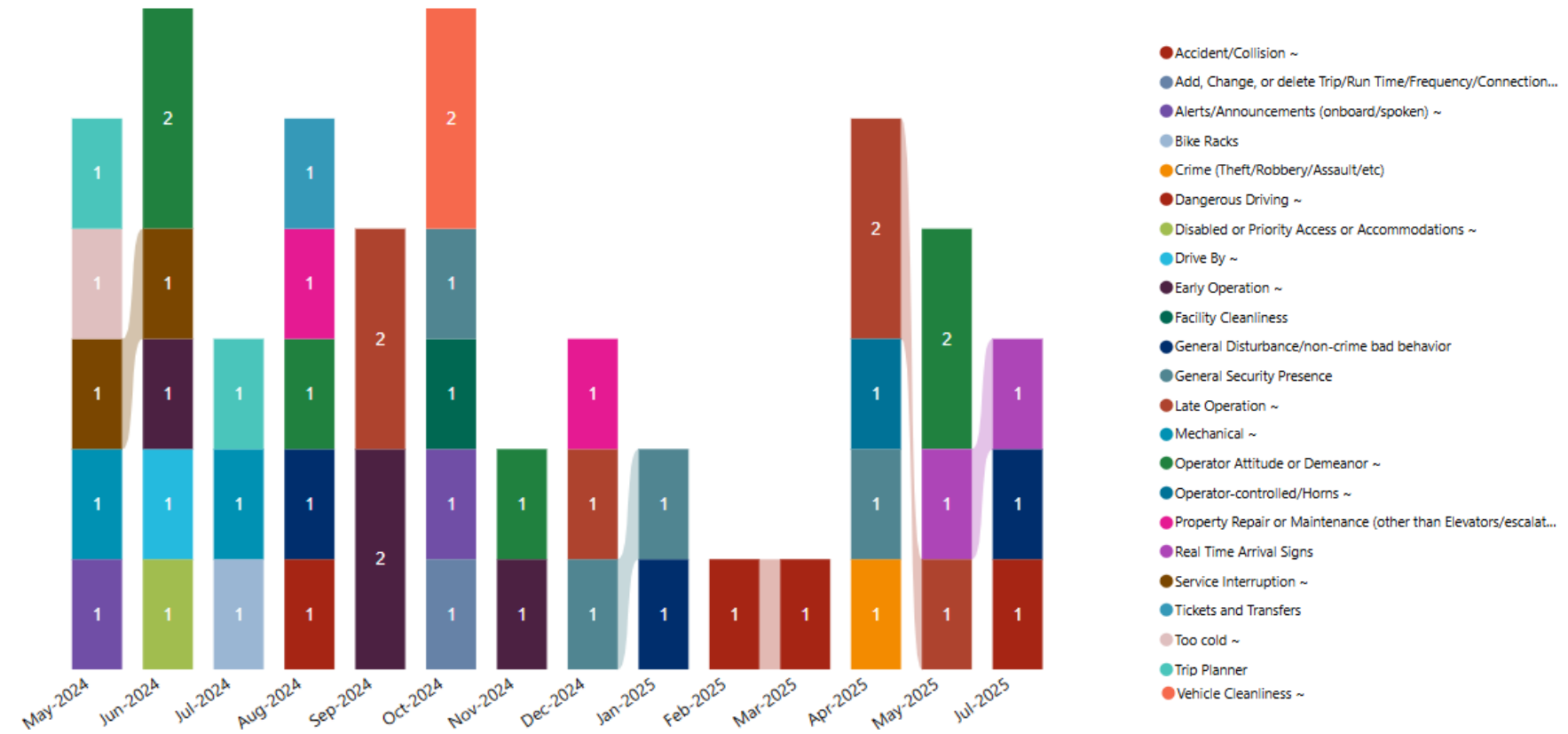
8:53 a.m. - **On Time**

19 min

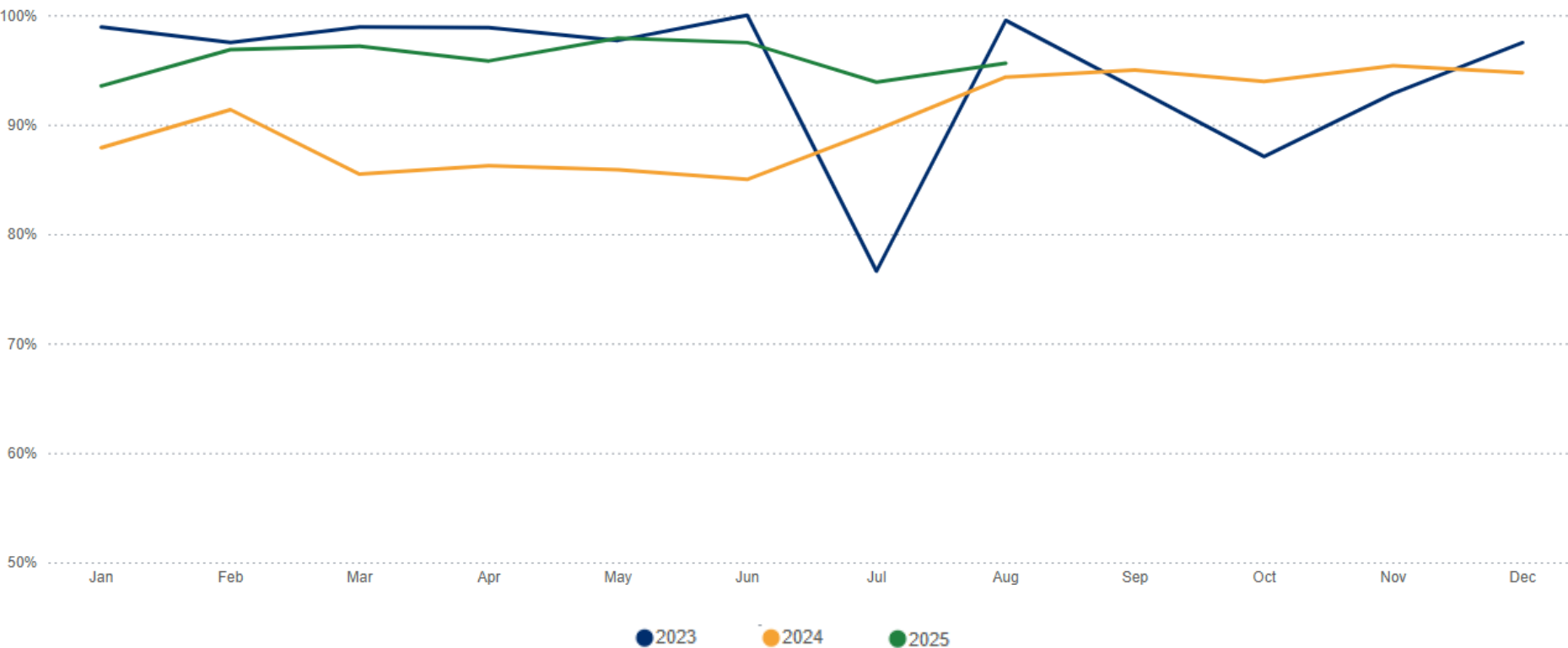
Trip Delivery – T-Line Operated as Scheduled



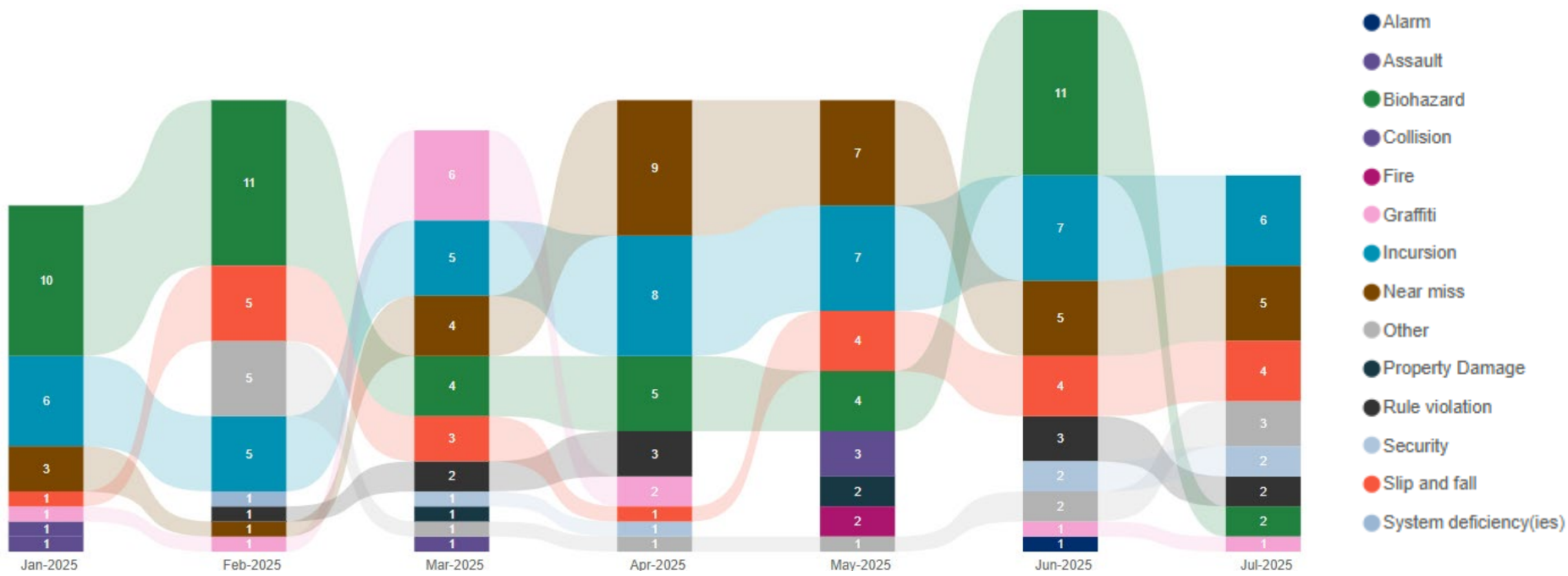
Customer Comments – T-Line



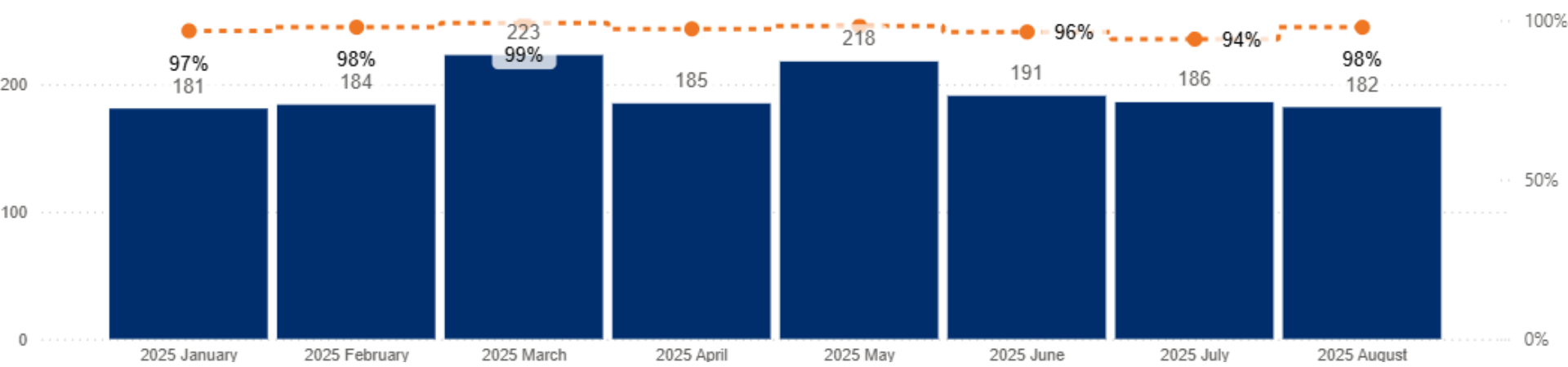
Fleet Availability – T-Line



Safety & Security Events – T-Line



Preventative Maintenance – T-Line



What we are doing with what we learned

- Working with Innovation Division on demos systems for:
 - Collision warnings
 - Wrong side door opening prevention
- Working with Enterprise Data and Analytics to leverage real time train tracking for precise on time performance by location
 - Will highlight issue areas to improve overall performance

Thank you.



 [*soundtransit.org*](https://soundtransit.org)

